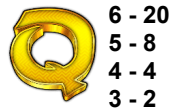
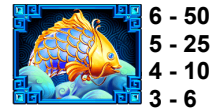
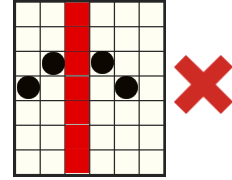
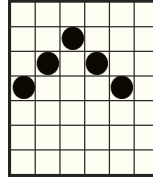


GAME RULES

All symbols pay from left to right on adjacent reels starting from the leftmost reel.



Ways to win



This symbol is WILD and substitutes for all symbols except for .

WILD symbol appears only on reels 2, 3, 4 and 5.

Wins awarded for left to right adjacent symbol combinations of any size. Reels 1 to 7 can have up to 7 symbols. In total the maximum number of possible ways to win is 117649.

MEGAWAYS™ IS USED UNDER LICENCE FROM

TUMBLE FEATURE

The TUMBLE FEATURE means that after every spin, winning combinations are paid and all winning symbols disappear. The remaining symbols fall to the bottom of the screen and the empty positions are replaced with new symbols coming from above. New symbols are of the same size as the initial spin result, before tumbles. Tumbling will continue until no more winning combinations appear as a result of a tumble.

All wins are added to the player's balance after all the tumbles resulted from a base spin have been played.

WILD MULTIPLIER

Whenever at least a WILD symbol hits and it's part of a winning combination, a random multiplier is applied to all winning combinations using WILD during base spins and tumbles. In the base game, possible multiplier values are: 2x, 3x, 5x, 8x, 10x, 15x, 30x and 40x.

FREE SPINS RULES

6x BONUS symbol pays 100x total bet.
5x BONUS symbol pays 25x total bet.
4x BONUS symbol pays 5x total bet.
3x BONUS symbol pays 3x total bet.



This is the BONUS symbol. It appears on all reels. Hit 3 or more BONUS symbols anywhere on the reels to trigger the FREE SPINS ROUND. The BONUS symbol does not explode during tumbles.

Before the round starts, select one out of 7 free spins options:



25 FREE SPINS
2X, 3X, 5X WILD MULTIPLIER



20 FREE SPINS
3X, 5X, 8X WILD MULTIPLIER



15 FREE SPINS
5X, 8X, 10X WILD MULTIPLIER



13 FREE SPINS
8X, 10X, 15X WILD MULTIPLIER



10 FREE SPINS
10X, 15X, 30X WILD MULTIPLIER



6 FREE SPINS
15X, 30X, 40X WILD MULTIPLIER



MYSTERY number of free spins, selected from the other options
MYSTERY multiplier range, selected from the other options

During the free spins round whenever WILD symbol hits and it is part of a winning combination, a random multiplier from the range selected applies to all winning combinations using WILD.

Hit 3 or more BONUS symbols during the free spins round to trigger more free spins, the same number as the option selected.

Special reels are in play during FREE SPINS feature.

ANTE BET

The player has the option to select the bet multiplier. Depending on the selected bet, the game behaves differently. The possible values are:

Bet multiplier 20x - Normal Play

Bet multiplier 25x - The chance to win FREE SPINS naturally is doubled, more BONUS symbols are present on the reels but symbol payable is not affected and they pay as for 20x bet multiplier.

The maximum win amount is limited to 5,000x bet. If the total win of a FREE SPINS ROUND reaches 5,000x the round immediately ends, win is awarded and all remaining free spins are forfeited

VOLATILITY 

High volatility games pay out less often on average but the chance to hit big wins in a short time span is higher.

Only the highest win is paid per winning combination on the same pay way.

When winning on multiple pay ways, all wins are added to the total win.

Free spins and bonus wins are added to the pay way win.

All wins are multiplied by base bet.

All values are expressed as actual wins in coins.

Free spins win is awarded to the player after the round completes.

Free spins total win in the history contains the whole win of the cycle.

SPACE and ENTER buttons on the keyboard can be used to start and stop the spin.

The theoretical RTP of this game is 96.50%

The RTP of the game when using the "ANTE BET" is 96.50%

MINIMUM BET: £0.20

MAXIMUM BET: £125.00

Malfunction voids all pays and plays.

HOW TO PLAY

Click the  or  buttons to change the bet value and open the bet menu.

Select the bet you want to use in the game.

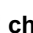
MAIN GAME INTERFACE


 opens the **SETTINGS** menu that contains settings which affect the way the game is being played.

 opens the Information page

CREDIT and **BET** labels show the current balance and current total bet.

Click on the labels to switch between coins view and cash view.

and  change up or down the current bet and open the bet menu, where you can change the bet denominations.

 starts the game

AUTOPLAY

opens the automatic play menu

SETTINGS MENU

INTRO SCREEN – toggles the introductory screen on and off

AMBIENT – toggles the ambient sound and music in the game on and off

SOUND FX – toggles the game`s sound effects on and off

GAME HISTORY – opens the game history page

INFORMATION SCREEN

 and  scroll between information pages

 closes the information screen

BET MENU

The bet menu shows the number of lines available in the game, and the current total bet in both coins and cash.

Use the  and  buttons in the COINS PER LINE and COIN VALUE fields to change the values.

The maximum win amount is limited to 5000X bet. If the total win of a round reaches 5000X bet the round immediately ends, win is awarded up to the cap and all remaining features are forfeited.

AUTOPLAY

Click on the buttons showing the number of possible auto-spins to start Autoplay

STOP AUTOPLAY

ON ANY WIN – whenever you win something, the Autoplay function stops

IF SINGLE WIN EXCEEDS – whenever a single win is above the sum written in this field, the Autoplay function stops

IF CASH INCREASES BY – whenever your current balance is above the sum written in this field, the Autoplay function stops

IF CASH DECREASES BY – whenever your current balance is below the sum written in this field, the Autoplay function stops

START AUTOPLAY – starts the Autoplay function