



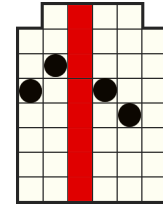
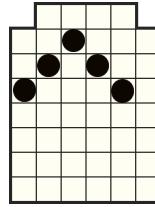



GAME RULES

All symbols pay from left to right on adjacent reels starting from the leftmost reel

	6 - 1000 5 - 500 4 - 200 3 - 40 2 - 20		6 - 100 5 - 50 4 - 40 3 - 20		6 - 50 5 - 20 4 - 10 3 - 6		6 - 40 5 - 16 4 - 10 3 - 6		6 - 30 5 - 12 4 - 8 3 - 4
	6 - 30 5 - 12 4 - 8 3 - 4		6 - 30 5 - 12 4 - 8 3 - 4		6 - 20 5 - 8 4 - 4 3 - 2		6 - 20 5 - 8 4 - 4 3 - 2		6 - 20 5 - 8 4 - 4 3 - 2

Ways to win



This symbol is WILD and substitutes for all symbols except for . WILD symbol appears only on reels 2, 3, 4 and 5, on the top row.

Wins awarded for left to right adjacent symbol combinations of any size. Reels 1 and 6 can have up to 7 symbols. Reels 2, 3, 4 and 5 can have up to 8 symbols. The top row of reels 2 to 5 spin independently from left to right. In total the maximum number of possible ways to win is 200704.

MEGAWAYS™ IS USED UNDER LICENCE FROM 

TUMBLE FEATURE

The TUMBLE FEATURE means that after every spin, winning combinations are paid and all winning symbols disappear. The remaining symbols fall to the bottom of the screen and the empty positions are replaced with new symbols coming from above. New symbols are of the same size as the initial spin result, before tumbles.

Tumbling will continue until no more winning combinations appear as a result of a tumble.

All wins are added to the player's balance after all the tumbles resulted from a base spin have been played.

FREE SPINS RULES



This is the SCATTER symbol. It appears on all reels.

During the FREE SPINS FEATURE every tumble increases the win multiplier by 1x. After every tumble the win of that tumble is multiplied by the current win multiplier.

At the beginning of the FREE SPINS ROUND choose one out of 4 options:

15 free spins, starting win multiplier 1x

10 free spins, starting win multiplier 5x

5 free spins, starting win multiplier 10x

Random number of free spins, random starting multiplier.

Hit 3 Scatter symbols during the FREE SPINS ROUNDS to trigger 5 more free spins. No limits!

Special reels are in play during FREE SPINS feature.

ANTE BET

The player has the option to select the bet multiplier. Depending on the selected bet, the game behaves differently. The possible values are:

Bet multiplier 20x - Normal Play

Bet multiplier 25x - The chance to win FREE SPINS naturally is doubled. More SCATTER symbols are present on the reels.

The maximum win amount is limited to 20,000x bet. If the total win of a FREE SPINS ROUND reaches 20,000x the round immediately ends, win is awarded and all remaining free spins are forfeited

VOLATILITY

High volatility games pay out less often on average but the chance to hit big wins in a short time span is higher.

Only the highest win is paid per winning combination on the same pay way.

When winning on multiple pay ways, all wins are added to the total win.

Free spins and bonus wins are added to the payline win.

All wins are multiplied by base bet.

All values are expressed as actual wins in coins.

Free spins win is awarded to the player after the round completes.

Free spins total win in the history contains the whole win of the cycle.

SPACE and ENTER buttons on the keyboard can be used to start and stop the spin.

The maximum RTP of this game is 96.58%

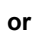
The minimum RTP of this game is 96.47%

MINIMUM BET: £0.20

MAXIMUM BET: £100.00

Malfunction voids all pays and plays.

HOW TO PLAY

Click the  or  buttons to change the bet value and open the bet menu.
Select the bet you want to use in the game.

Press the SPIN button to play.

MAIN GAME INTERFACE


 opens the SETTINGS menu that contains settings which affect the way the game is being played.

 opens the Information page

CREDIT and BET labels show the current balance and current total bet.

Click on the labels to switch between coins view and cash view.

and  change up or down the current bet and open the bet menu, where you can change the bet denominations.

 starts the game

 opens the automatic play menu

SETTINGS MENU

QUICK SPIN – Selects the Quick Spin setting for game reels to start automatically and stop as soon as released

INTRO SCREEN – toggles the introductory screen on and off

AMBIENT – toggles the ambient sound and music in the game on and off

SOUND FX – toggles the game's sound effects on and off

GAME HISTORY – opens the game history page

INFORMATION SCREEN

 and  scroll between information pages

 closes the information screen

BET MENU

The bet menu shows the number of lines available in the game, and the current total bet in both coins and cash.

Use the  and  buttons in the COINS PER LINE and COIN VALUE fields to change the values.

AUTOPLAY

Click on the buttons showing the number of possible auto-spins to start Autoplay

SKIP SCREENS option auto-skips the feature introduction and end screens after a short period of time

STOP AUTOPLAY

ON ANY WIN – whenever you win something, the Autoplay function stops

IF FEATURE IS WON – whenever a feature like bonus game or free spins is won, Autoplay will stop

IF SINGLE WIN EXCEEDS – whenever a single win is above the sum written in this field, the Autoplay function stops

IF CASH INCREASES BY – whenever your current balance is above the sum written in this field,
the Autoplay function stops

IF CASH DECREASES BY – whenever your current balance is below the sum written in this field,
the Autoplay function stops

START AUTOPLAY – starts the Autoplay function